

Ultrasonography

Outstanding Performance & Value

The small animal range of SonoScape ultrasound scanners incorporate the latest colour doppler technology with ergonomic design for user friendly, fast workflows. The systems provide outstanding image resolution and functionality, enabling diagnosis of the subtlest pathology, and with their robust build quality are exceptional value for busy small animal clinics.

- **SonoScape E1** – black & white scanner ideal for small animal abdominal work.
- **SonoScape E2** – mid range colour doppler – our most popular scanner for small animal work including cardiac examinations. Full range of probes for specialist techniques - ideal for general small animal work and priced to suit most budgets.
- **SonoScape X5** - colour doppler – higher resolution than the E2 and faster processing time. The S8Exp has a range of high definition convex, micro convex, phased array and linear probes.
- **SonoScape S9Pro** - referral level for very high definition work. Full cardiac functionality including integrated ECG. Comprehensive range of specialist probes including very high definition probes for exotics.



Probes:

Convex probes:

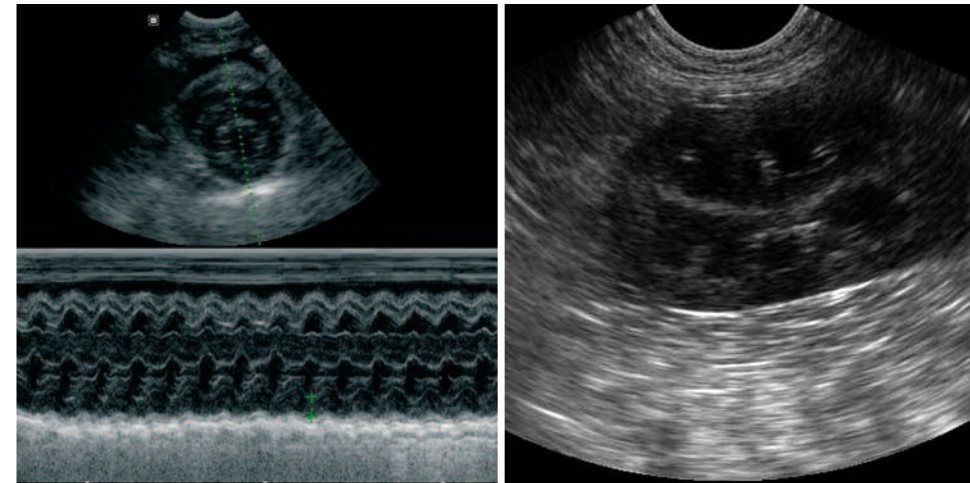
- C611 – micro convex array (135 degrees, wide angle), (4-16MHz) – very small foot print so fits between cats ribs
- C322 (2.0-7.0 MHz) – convex array for general ultrasonography in giant and medium sized dogs

Linear probe:

- L741 (4.0-16.0MHz) – very high resolution, T shaped linear – small mammals, snakes, ophthalmic
- I0L2 (9.1-16.0MHz) Very high resolution and small foot print - ophthalmic, exotics (tortoise inside shell), feline extremities

Phased array:

- 5PI (3.0-9.0MHz) medium, large dogs
- 8PI (6.0-16.0MHz) small mammals



Features

- Excellent range of programmable presets
- Different probe combinations can be provided and additional probes can be added as required for greater clinical functionality without the need for software upgrades
- Measurements include distance, eclipse and trace
- Multi-beam processing digital beam former
- Two active probe connectors giving push button change during examination
- Integral battery with approximately 3 hours operating life
- DICOM transmission and worklist
- Warranty: 3 year warranty on scanners and probes
- Accessories: Carrying case for transport as standard Trolley and foot switch are available as options
- Training: In house clinical training provided to improve skill set for the whole clinical team to the standard required

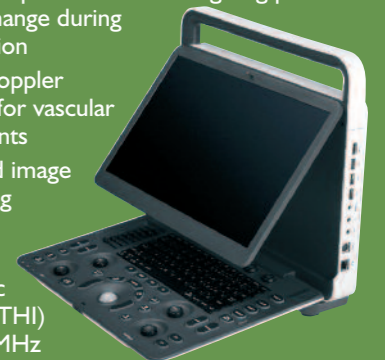


Technical Specification:

E2

The E2 comes complete with:

- Two active probe connectors giving push button change during examination
- Power Doppler included for vascular assessments
- Advanced image processing software
- Tissue Harmonic Imaging (THI) up to 16MHz
- Cine store of 999 frames (99secs)



X5

- B, M, PW, CW mode (with phased array probe)
- CDI (directional) & DPI (non directional Colour Doppler)
- Tissue harmonic imaging
- High pulse repetition frequency
- DICOM transmission and worklist



S9 Pro

- B, M, PW, and CW mode (with phased array probe)
- CDI (directional) DPI (non directional Colour Doppler)
- Tissue harmonic imaging
- Fully integrated ECG
- High pulse repetition frequency
- DICOM transmission and worklist



For full technical specification go to www.celticsmr.co.uk or call 0800 279 9050