

# Precision radiography

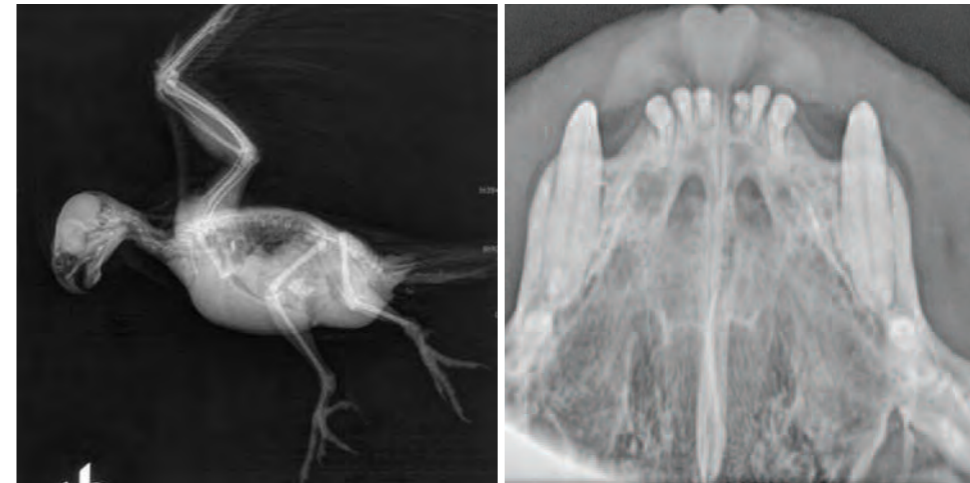
At its very best

The meX range of high frequency (HF) portable X-ray generators, incorporates the latest high frequency generator technology, providing high power outputs with precision imaging, ideal for small animal practice.



### Key Features:

- Power range 1.6kW-5kW
- kV range 40-100kV
- Dual laser
- Fast exposure times
- High resolution images  
- *first time, every time*



### Precision radiography at its best High performance

The meX range incorporate the latest high frequency generator technology with a power range of 1.6kW to 5kW to suit all practice requirements.

### Precision Radiography

High power outputs and fast exposure times provide sharp, high resolution images – each time, every time.



### Technical specification:

#### meX+ 20HF

- Power output 1.6kW (80kW)
- kVp range per 1kV steps 40-100kV
- mAs range 0.3mAs-50mAs (22 steps)
- Touch panel display
- Focal spot 1.2mm
- APR
- Dual laser



#### meX+ 40HF

- Power output 2.4kW (80kW)
- kVp range per 1kV steps 40-100kV
- mAs range 0.4mAs-100mAs (25 steps)
- Touch panel display
- Focal spot 1.2mm
- APR
- Dual laser



#### meX+ 60HF

- Power output 3.2kW (80kW)
- kVp range per 1kV steps 40-100kV
- mAs range 0.4mAs-100mAs (25 steps)
- Touch panel display
- Focal spot 2mm
- APR
- Dual laser



#### meX+ 100HF

- Power output 5kW (80kW)
- kVp range per 1kV steps 40-110kV
- mAs range 0.1mAs-100mAs (40 steps)
- Touch panel display
- Focal spot 1.8mm
- APR
- Dual laser







# Precision Radiography

at its very best

The Nova range of HF X-ray generators is the most popular range of static generators with over 250 installations in UK vet practices, offering major advances in performance at an affordable price. The units are fully compatible with CR and DR systems, and are used in universities, referral centres and general practices throughout the UK.

The 6kW and 30kW units incorporate the latest 3rd generation HF technology, giving unparalleled performance from a domestic 13 amp power supply.

The units come in either static or mobile configurations to suit your practice requirements.



Precision radiography at its very best

**DR or CR retrofit** – the Nova systems are fully compatible with DR and CR systems.

**High Frequency Technology** – latest 3rd generation HF technology giving unparalleled performance from a 13 amp power supply.

**Vet's choice** – most popular static x-ray generator with over 250 veterinary installations.

Technical specification:

## VR Table Plus

- Floating top, four way table
- Fully DR and CR compatible
- Table top brake for positioning
- X-ray tube always centred on cassette
- Potter bucky and grid available as optional extras



## VR Table Plus, with sliding column

- Sliding column allows full table coverage
- Upright lateral exposures
- Variable film:focal distance
- Rotating base
- Floating top, four way table
- Fully DR and CR compatible
- Table top brake for positioning
- X-ray tube always centred on cassette
- Potter bucky and grid available as optional extras



## Nova Compact

- Rotate X-ray tube support through 180 degrees
- X-ray head mounted on counterbalanced cantilever suspension for easy positioning
- Easy to use touch screen interface



## Nova 6

- kVp range: 40-120 kVp (1kVp steps)
- mAs range: 0.5 – 320mAs (27 steps)
- Maximum current: 150 mA (high frequency)
- Tube: rotating anode
- Focal spot size: 0.6, 1.3mm
- Power: 6kW
- APR library

## Nova 30

- kVp range: 40-120 kVp (1kVp steps)
- mAs range: 0.5 – 200mAs (25 steps)
- Maximum current: 425 mA (high frequency)
- Tube: rotating anode
- Focal spot size: 0.6, 1.3mm
- Power: 30kW
- APR library

