



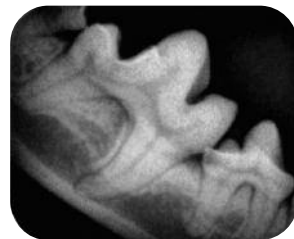
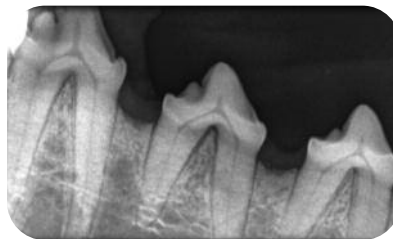
Dental Cassette for CR 30-X



Agfa have developed a dental cassette for their CR 30X digital processor, the most popular digital processor in the UK veterinary market. The dental cassette contains a range of intra oral plates, 2x(2x3cm), 2x(4x4cm), 2x(3x4cm), 1x (3x5cm), 1x(6x7cm occlusal), 1x(8x10cm nasal turbinates).

The intra oral plates are easy to use, and can be put into a plastic sleeve and inserted into the animal's mouth. Once the exposure is taken, the intra oral plates are simply mounted in the cassette and developed in 60 seconds, producing high definition dental images, so dental pathology can be identified at an early stage to improve dental health. With an estimated 25% to 30% of anaesthetics in small animals carried out for dental problems the ability to accurately detect periodontal disease at an early stage will have major benefits for animal health and welfare.

The range of plate sizes enables dental imaging from rabbits to Great Danes to be carried out quickly and efficiently. Multiple images can be developed in 1 simple process.



Nomad Pro hand held x-ray system + CR 30-X dental plate

the Perfect Partnership



The NOMAD Pro hand held X-ray system is fast, safe and produces excellent diagnostic images, and is the perfect partner for the CR30X dental plate.

The Nomad Pro's light weight, cordless design with enhanced user interface, presets and programmable exposure settings, improves the speed, convenience and efficiency of dental radiography.

- **Light weight, cordless design**
- **Handheld design allows operator to stay with patient reducing time**
- **0.4mm focal spot**
- **HF 60kV DC X-ray generator produces high resolution images whilst reducing patient dose**

For further information contact **Celtic SMR Ltd 0800 279 9050** or visit our website www.celticsmr.co.uk